



# GAT MONTHLY MEMBERSHIP PROGRESS REPORT

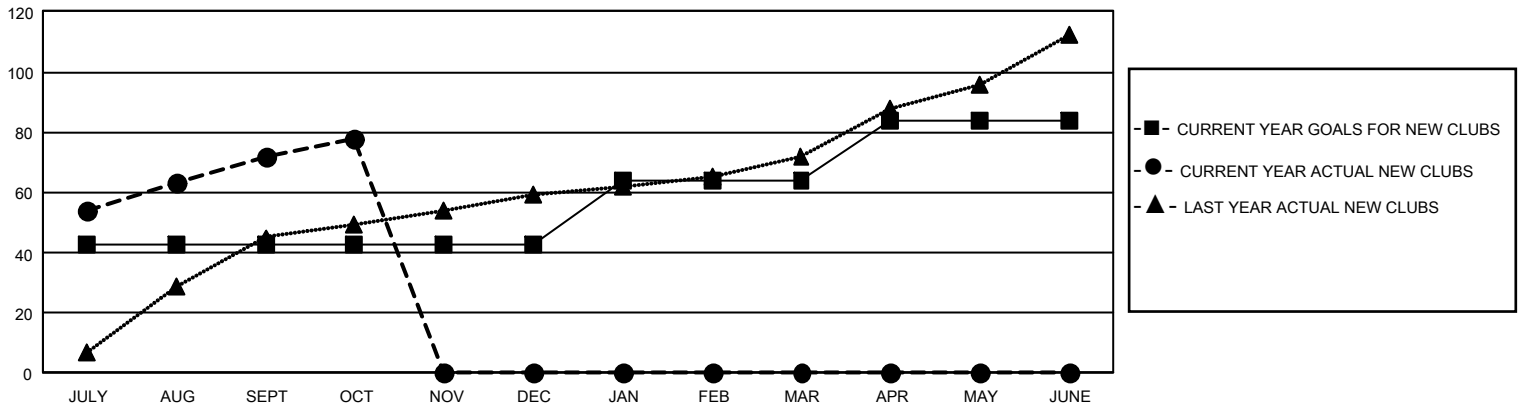
Results as of: 10/31/2025

## GMT Constitutional Area 6 - I, Group F

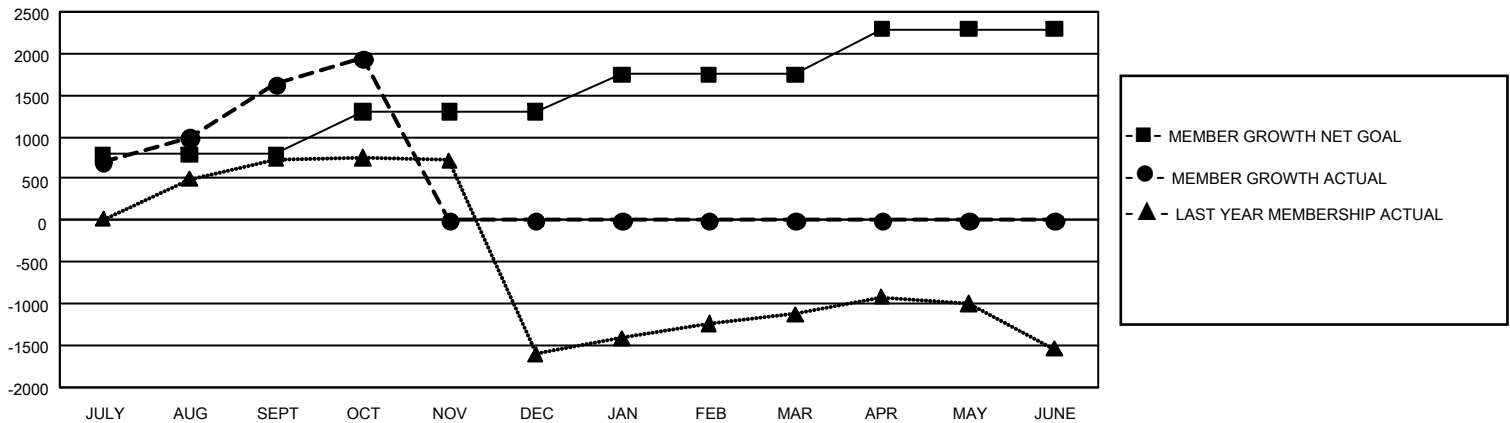
REPORT DOES NOT INCLUDE CLUBS IN UNDISTRICTED AREAS.

Clubs				Members			
RESULTS FOR 2025-2026				RESULTS FOR 2025-2026			
QUARTER	NEW CLUB GOAL	NEW CLUBS	DROPPED CLUBS	QUARTER	MEMBER GROWTH NET GOAL	MEMBER GROWTH ACTUAL	DROPPED MEMBERS ACTUAL (including transfers)
JULY/AUG/SEPT	129	72	5	JULY/AUG/SEPT	790	3,385	1,454
OCT/NOV/DEC	0	6	1	OCT/NOV/DEC	515	565	221
JAN/FEB/MAR	63	0	0	JAN/FEB/MAR	442	0	0
APR/MAY/JUNE	60	0	0	APR/MAY/JUNE	545	0	0

GOALS AND ACTUAL NEW CLUBS CUMULATIVE



GOALS AND ACTUAL MEMBERS CUMULATIVE



DROPPED CLUBS: 6

524 CLUBS OF 1,253 ADDED 1 OR MORE NEW MEMBERS

### GENDER DISTRIBUTION

MALE	23,486 (72.66%)
FEMALE	8,828 (27.31%)
NON BINARY	0 (0.00%)
PREFER NOT TO ANSWER	10 (0.03%)

### DROPPED MEMBERS

DECEASED	18
CLUB CANCELLED	69
OTHER	1,581
<b>TOTAL</b>	<b>1,668</b>

[CLICK HERE FOR CUMULATIVE MEMBERSHIP DATA](#)

TOTAL FAMILY UNIT MEMBERS 11,964

FAMILY MEMBERS PAYING HALF DUES 7,251